



ADDENDUM #1

February 16, 2021

TO: ALL POTENTIAL SUBMITTERS

FROM: RON VENTURELLA, BUNCOMBE COUNTY PROCUREMENT MANAGER

SUBJECT: ADDENDUM #1 FOR RFP BUNCOMBE COUNTY COMPREHENSIVE PLAN 2023

The following changes, revisions, additions, and/or clarifications to the plans and/or specifications are hereby made a part of the original documents.

Addendum # 1

A mandatory pre-proposal conference was held on February 10, 2021 10:00am. The following individuals attend the meeting.

Greer, Ray – Stantec
Hancock, Tim - Stantec
Kelli McCormick – Kendig Keast Collaborative
Kenny Armstrong – J.M. Teague Engineering & Planning
Leigh Anne King – Clarion Associates
Linda Giltz
Martha Eberle - Andropogon Associates
Meg Nealon – Nealon Planning
Ron Venturella – Buncombe County
Roos, Shai - Stantec
Sarah Sinatra Gould – S&ME
Sealy Chipley Stanley – Fernleaf Interactive
Staudt, Christy – Traffic Planning and Design, Inc.
Whitehurst, Jonathan – Kimley-Horn
Zuyeva, Lyuba - VHB
Shannon Capezzali – Buncombe County
Gillian Phillips – Buncombe County
Brian Wert – RK&K
Bronson, Rachael – Traffic Planning and Design, Inc.
Carter, Kristy – Traffic Planning and Design, Inc.
Catherine Hartley – Tindale Oliver
Echeverry, Mariate - AECOM
Engel, Rob - Stantec
Gary Mitchell – Kendig Keast Collaborative
Geoff Green – Clarion Associates
Ben Hitchings – Green Heron Planning, LLC
Eric Wollridge – Destination by Design

The following questions were asked by attendees (listed in no particular order):

Q) Is the County's Strategic Plan on the website yet?

A) The plan may be found at this link.

<https://www.buncombecounty.org/governing/commissioners/strategic-plan.aspx>

Q) Can you share the budget for this project?

A) Our estimated budget is \$400,000.

Q) Will the PowerPoint be available for later?

A) The PowerPoint is included with this addendum as an attachment.

Q) The RFP states that public engagement should include "a website, including a web-based portal for education and input on the County's website, videos, and social media..." Is the expectation that the project website would be located on the County's website?

A) Yes. The plan is for the project to be located on the County's website.

Q) Do you expect that the Steering Committee members will be selected prior to the consultants?

A) We do expect the Steering Committee to be selected before the contract is awarded.

Q) Any sub consultants required to complete forms?

A) The proposal should be turned in by the primary contractor listing any subs used for the project.

Q) Available data/mapping to start land use inventory, or fresh start by consultant?

A) We do have data available and the consultant will work closely with our GIF team pulling the data and would be resource.

Attached:

PowerPoint presentation (6 slides)

END OF ADDENDUM #1

RFP BUNCOMBE COUNTY COMPREHENSIVE PLAN 2023



COMPREHENSIVE PLAN RFP PRE-SUBMITTAL CONFERENCE

Presented by

Planning & Development
Department



BUNCOMBE COUNTY



Planning Department Staff



NATHAN PENNINGTON
Planning Director



GILLIAN PHILLIPS
Long Range Division



SHANNON CAPEZZALI
Long Range Division



HAYLEE MADFIS
Long Range Division

Primary Contact for RFP Submittals:

Ron Venturella, Procurement Management – ron.venturella@buncombecounty.org

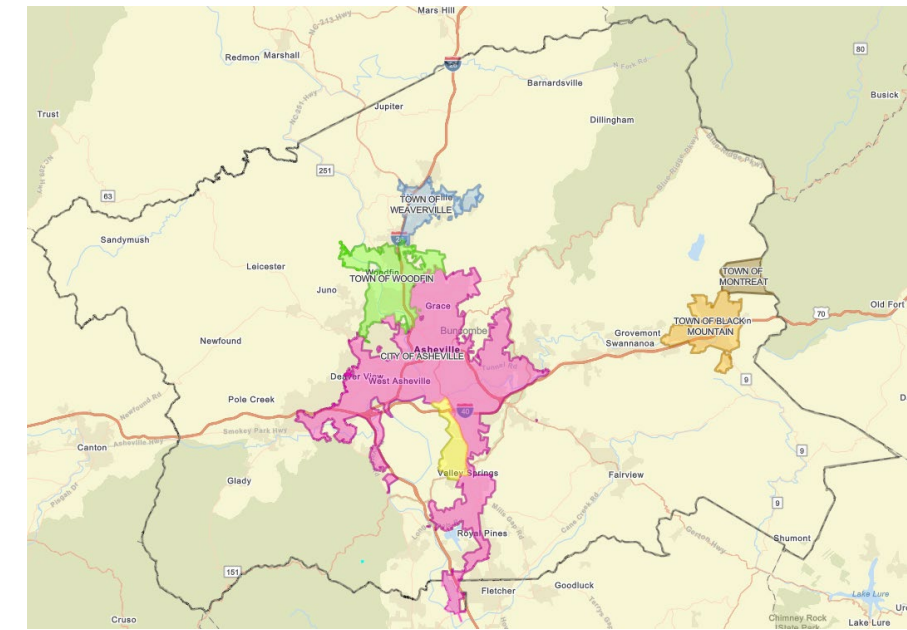
Buncombe County

WHO WE ARE

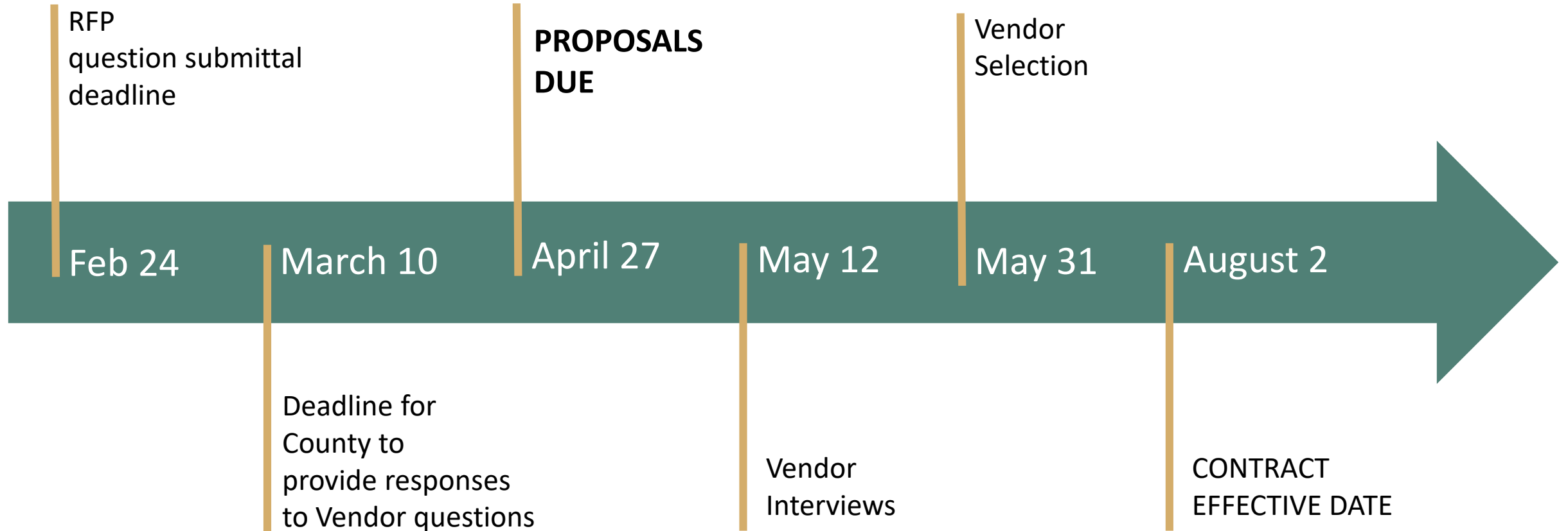
- Rural, suburban, and urban areas
- 6 municipalities with Asheville as its largest
- Growing mountain gateway community
- Large service based, tourism industry
- County-wide zoning adopted in 2009

CHALLENGES

- Sprawling growth
- Infrastructure constraints from topography
- Loss of farmland and open space
- High cost of housing
- Economic equity
- Growing opposition to development



Consultant Selection Timeline



Tentative Comprehensive Plan Timeline



GUIDING PRINCIPLES

1. Focus on Public Engagement
2. Clear, Concise, Accountable Document
3. Commitment to sustainability, protection of environmentally sensitive land, resiliency
4. Equity and inclusion throughout the planning process and in The Plan

